

Mallets

Extreme Beethoven

(Metamorphoses on themes by Ludwig van Beethoven)
for wind orchestra

Johan de Meij

Adagio un poco mosso ($\text{♩} = 60-66$)

12 14 12 2

Vibraphone

mp *dim.*

31 *p* (very gentle attacks)

35 Allegro non troppo ($\text{♩} = 84$) 51 67 78

15 16 11 5

Tubular Bells

ff

86

Vibraphone

ff

92 14 14

112 Tub. Bells

ff

Accelerando

4

119

Mallets

2

127 Con Brio ($\text{♩} = 60$)

Vibraphone

127

Tub. Bells

sfz *sfz* *sfz* *sfz* (*sfz sempre*)

sfz *sfz* *sfz* *sfz* (*sfz sempre*)

135

sfz *sfz* *sfz* *sfz* *sfz* *sfz* *sfz*

sfz *sfz* *sfz* *sfz* *sfz* *sfz*

143

sfz (*sim.*)

sfz (*sim.*)

Poco rit.

155 A tempo

sfz *sfz* *sfz* *sfz* *sfz* *sfz* *sfz* *sfz*

sfz *sfz* *sfz* *sfz* *sfz* *sfz* *sfz* *sfz*

160

sfz *sfz* *sfz* *sfz* *sfz* *sfz* *sfz* *sfz*

sfz *sfz* *sfz* *sfz* *sfz* *sfz* *sfz* *sfz*

dim. e rall.

179 Andante mosso ($\text{♩} = 60$)

Vibraphone

16

pp

Mallets

3

199

Marimba

pp

207

215

p

p

223

mf

mf

226

cresc.

(sim.)

cresc.

231

Bells

ff Tub. Bells

ff

239 Con moto (♩ = 10)

235

Mallets

4

257 Solemn ($\text{♩} = 52$)

17 3 3

240

265 ($\text{♩} = 104$) rall. 283 Andante mosso ($\text{♩} = 60$) 290

8 3 7 7 24

sempre rall. e dim.

314 Tempo di marcia ($\text{♩} = 100$)

20 336

Xylophone

cresc.

ff

Bells

ff

340

346

352 2 Cymbals

f

gradual decresc.

gradual decresc.

362

372 388 412 Tempo giusto ($\text{♩} = 96$) G.P. 430

16 24 17 16

Mallets

5

446 460 468

14 8 4

Vibraphone

mp cresc.

Tub. Bells

mp cresc.

478

cresc. sempre

ff

cresc. sempre

ff

488

487

508 520

12 7 4

Xylophone

f f

Tub. Bells

ff

Vibraphone

f

(let ring)

3 3 2 3

mf

mp

(let ring)

f

536 548 566

12 18 26

592

Tub. Bells

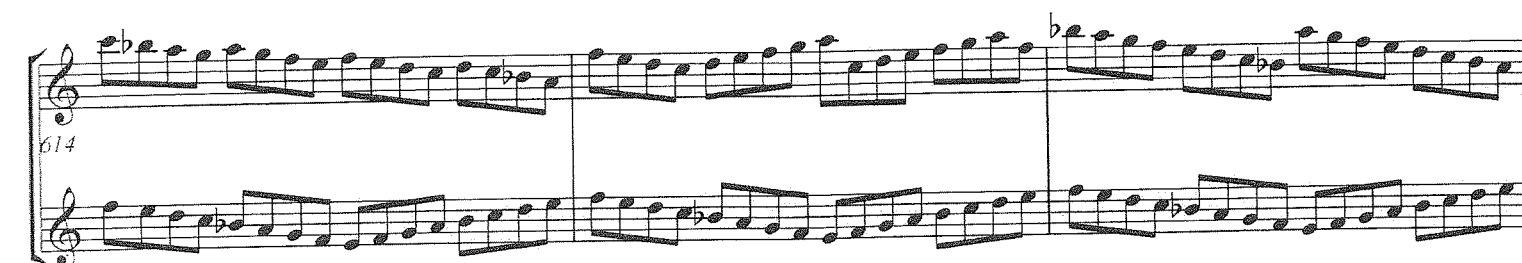
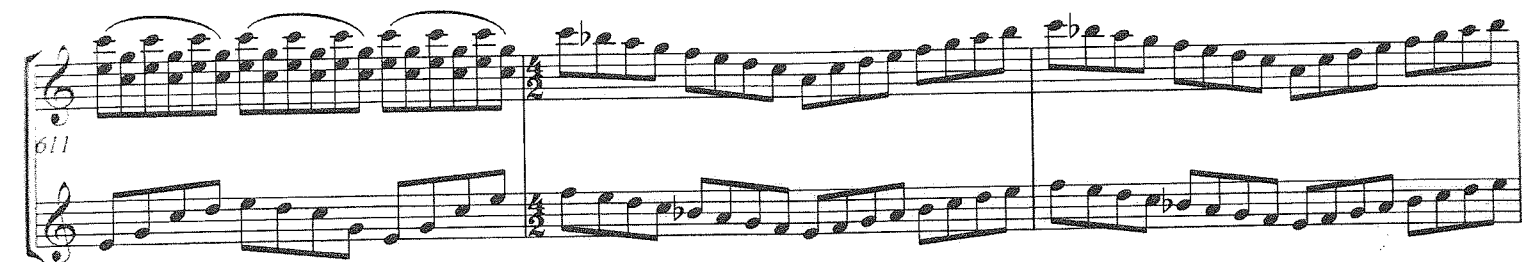
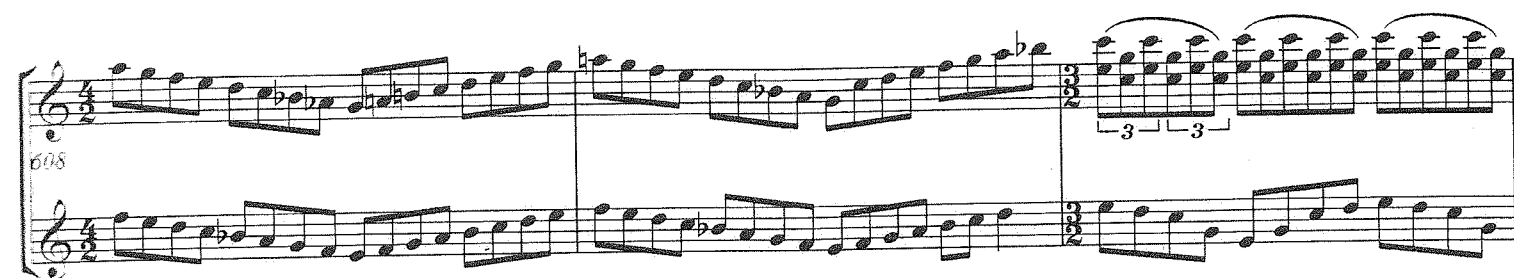
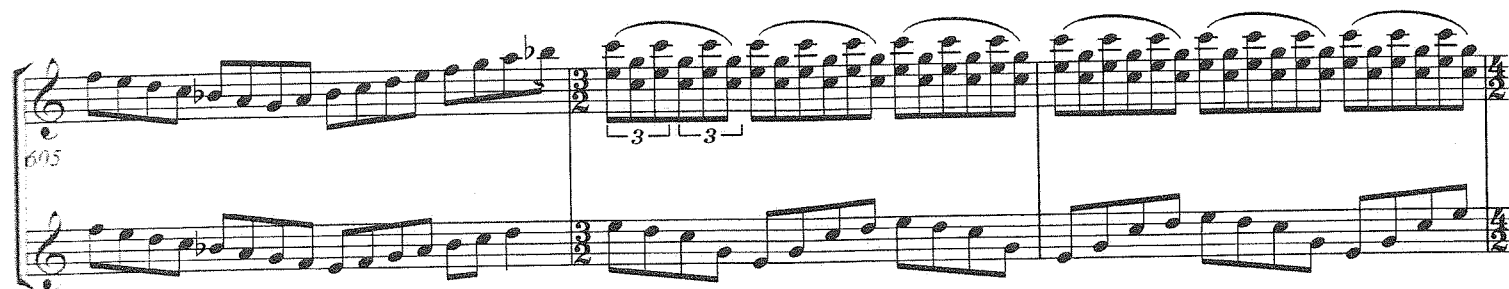


Allargando

604

Maestoso (♩ = 76)

Bells & Vibraphone



Measures 617-620. The score is for mallets, featuring a continuous eighth-note pattern in both staves. Measure 617 starts with a treble clef and a key signature of one flat. Measure 620 ends with a trill (tr) in the treble staff.

Measures 620-636. The tempo is **Allegro con brio** ($\text{♩} = 172$). The vibraphone part (top staff) plays a series of chords, mostly dyads, with accents (*sfz*). The tub bells part (bottom staff) plays a series of single notes, also with accents (*sfz*). The key signature changes to one sharp in measure 636.

Measures 645-679. The tempo changes to **Rall.** ($\text{♩} = 80$) for measures 645-655, then **Accel. molto** ($\text{♩} = 172$) for measures 656-679. The vibraphone part (top staff) plays chords with rests. The bells part (bottom staff) plays a series of chords, starting with *ff* dynamics. The key signature changes to one sharp in measure 656.

Measures 683-700. The vibraphone part (top staff) plays chords with rests. The bells part (bottom staff) plays a series of chords, starting with *ff* dynamics. The key signature changes to one sharp in measure 683. The section ends with a glissando in both staves.